

APPLICATIONS AVAILABLE  
IN EXTERIOR WALL  
MOUNT, INTERIOR WALL  
MOUNT, OR FREE  
STANDING SYSTEMS.

**FEATURES:**

- Aluminum construction
- Attractive round formed arch
- Neoprene gaskets
- Safe touch-free drying
- Adjustable producers and layout
- TFC motors - one year warranty
- Three producer system
- CNC built on hubs

**OPTIONS:**

- 7.5 H.P., 10 H.P. or 15 H.P. producers
- Soft start panel
- Side producers
- UL listed starter panel
- Custom application
- Oscillating nozzle
- Thermo-plating (any color)



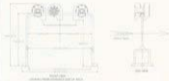
Made in the U.S.A.

# premier®

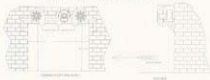
*Touchless Drying System*

STANDARD SERIES

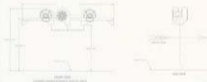
**STANDARD SERIES - S30**



**STANDARD SERIES - S30 - EXTERIOR WALL MOUNT**



**STANDARD SERIES - S30 - INTERIOR WALL MOUNT**



**VOLTAGE:**

**7.5 H.P.**

- 208 VAC FLA - 20.4
- 230 VAC FLA - 18.4
- 480 VAC FLA - 9.2

**10 H.P.**

- 208 VAC FLA - 26.7
- 230 VAC FLA - 23.8
- 480 VAC FLA - 11.9

**15 H.P.**

- 208 VAC FLA - 40.0
- 230 VAC FLA - 35.0
- 480 VAC FLA - 17.0