

**APPLICATION AVAILABLE
IN A FREE STANDING
AND INTERIOR WALL
MOUNT SYSTEM**



Made in the U.S.A.

FEATURES:

- Aluminum construction
- Neoprene gaskets
- Safe touch-free drying
- Round leg mounts
- Adjustable producers
- Complete cover surrounds
- TEFC motors - one year warranty
- Attractive Premier® graphics
- Four producer system
- CNC built on hubs

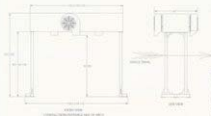
OPTIONS:

- 7.5 H.P., 10 H.P. or 15 H.P. producers
- Soft start panel
- Side producers
- UL listed starter panel
- Silencer cones
- Custom application
- Oscillating nozzle
- Thermo-plating (any color)
- Private labeling

premier
Touchless Drying System

EXECUTIVE SERIES

EXECUTIVE SERIES – E40



VOLTAGE:

7.5 H.P.

- 208 VAC FLA – 20.4
- 230 VAC FLA – 18.4
- 480 VAC FLA – 9.2

10 H.P.

- 208 VAC FLA – 26.7
- 230 VAC FLA – 23.8
- 480 VAC FLA – 11.9

15 H.P.

- 208 VAC FLA – 40.0
- 230 VAC FLA – 35.0
- 480 VAC FLA – 17.0

EXECUTIVE SERIES – E40 – INTERIOR WALL MOUNT

